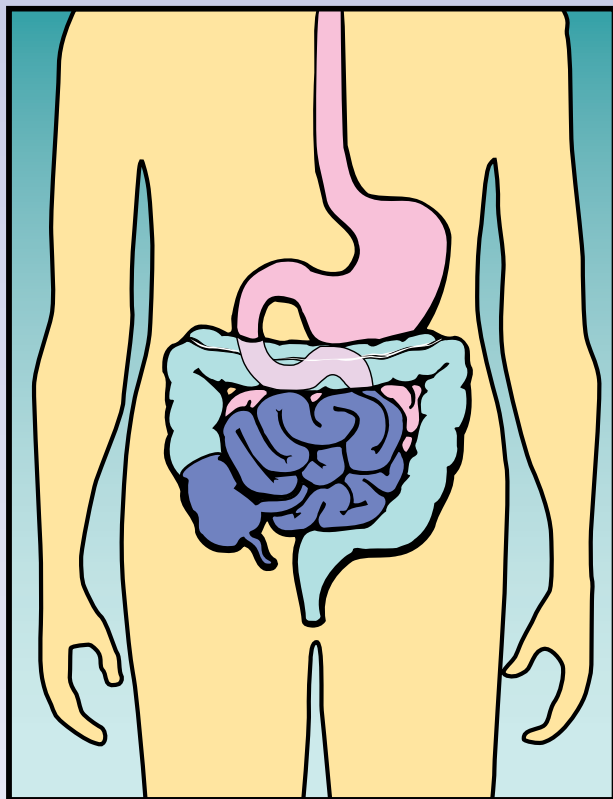


# CT ORAL CONTRAST SYSTEM

## THE ABDOMINAL AND PELVIC EXAM

60 TO 90 MINUTES PRIOR... OR NIGHT BEFORE EXAM

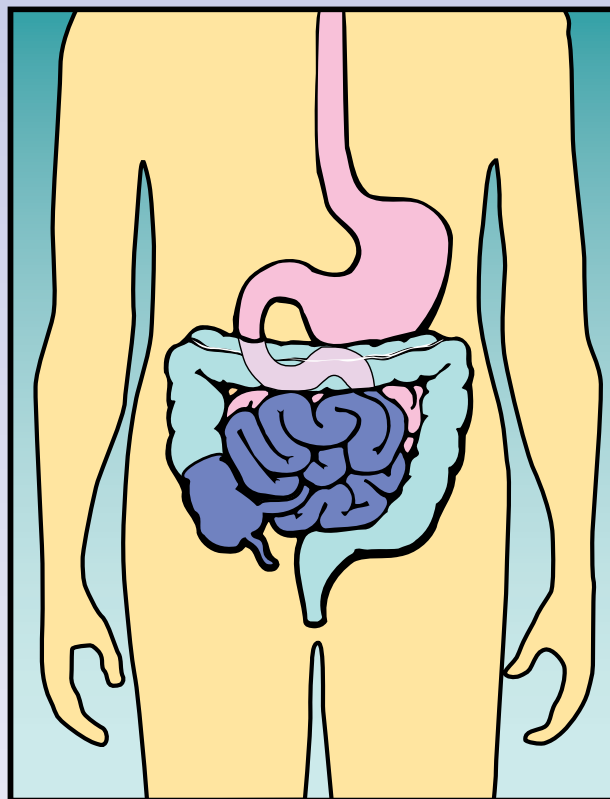


**1** For an abdominal and pelvic study, administer 450 mL of barium sulfate suspension 60 to 90 minutes in advance of the exam, or the night before, depending on which is more convenient.

**2** Then administer 300 mL of barium sulfate suspension ½ hour prior, and an additional 150 mL 2 to 5 minutes before the scan.

## THE 30-MIN. ABDOMINAL AND PELVIC EXAM

NO ADVANCE PREP NECESSARY



**1** For an abdominal and pelvic study, have patient take 300 mL of barium sulfate suspension ½ hour prior to the scan.

**2** Then, 2 to 5 minutes before the scan, have patient take another 150 mL of barium sulfate suspension.

**PLUS**, perform a 400 mL low-volume enema.



Consult package insert for full dosing instructions.  
Transit times are approximate and results may vary.



Visualize a healthier world

E-Z-EM, Inc., Suite LL26, 1111 Marcus Avenue, Lake Success, NY 11042 USA  
Phone: (800) 544-4624, (516) 333-8230 • Fax: 516-302-2919 • [www.ezem.com](http://www.ezem.com)

Manufactured by: E-Z-EM, INC., Lake Success, NY 11042 USA

E-Z-EM and Readi-Cat are registered trademarks of E-Z-EM, Inc. ©2007 E-Z-EM, Inc. rev. 03/07 1303866